

RENOVATIONS TO:
WHOLE FOOD MARKET
 45 BEACON STREET
 SOMERVILLE, MA

Project Title:

JACOBS
 JACOBS CONSULTANTS, INC.
 JACOBS ENGINEERING GROUP, INC.
 One Broadway
 Cambridge, MA 02142
 (617) 491-6450

Prepared By:

CONTEXT PLAN

Designed by : C.X.G.
 Drawn by : C.A.N.
 Checked by : S.E.O.
 Scale : 1" = 100'-0"
 Date : 03/05/13

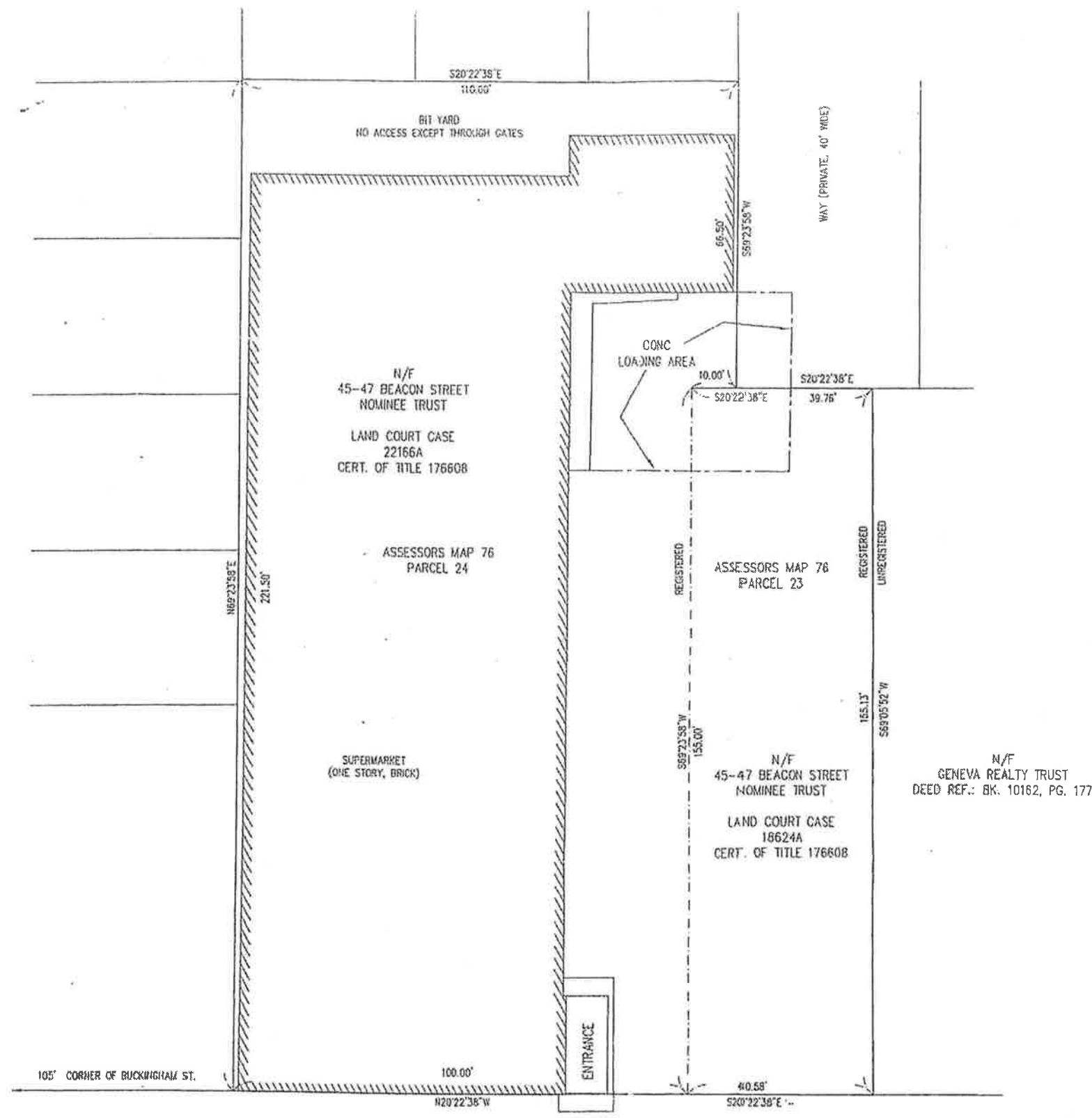
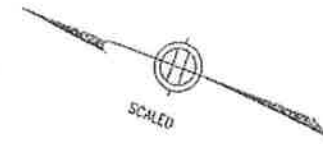
Drawing No.:

L-001

Project No.:

NOTES:

PLAN REFERENCE: LAND COURT PLAN 22166A
 LAND COURT PLAN 18624A
 PLAN BOOK 166, PLAN 29



N/F
 45-47 BEACON STREET
 NOMINEE TRUST
 LAND COURT CASE
 22166A
 CERT. OF TITLE 176608

ASSESSORS MAP 76
 PARCEL 24

SUPERMARKET
 (ONE STORY, BRICK)

ASSESSORS MAP 76
 PARCEL 23

N/F
 45-47 BEACON STREET
 NOMINEE TRUST
 LAND COURT CASE
 18624A
 CERT. OF TITLE 176608

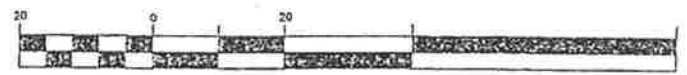
N/F
 GENEVA REALTY TRUST
 DEED REF.: BK. 10162, PG. 177

I CERTIFY THAT THE INFORMATION SHOWN ON THIS PLAN IS BASED ON RECORD INFORMATION AND ON AN ACTUAL FIELD SURVEY AND IS CORRECT TO THE BEST OF MY KNOWLEDGE.

John W. McEachern
 JOHN W. McEACHERN



GRAPHIC SCALE



(IN FEET)
 1 inch = 20 ft

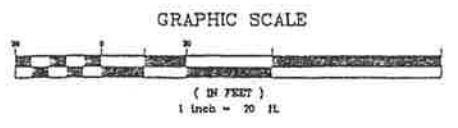
Beacon Street

Bowditch & Crandall, Inc. 252 Massachusetts Ave. Arlington, Ma. 02474 1-781-641-9600 1-781-641-9601 (Fax)				PLAN OF LAND BEACON STREET SOMERVILLE, MA.	
SIZE	FSCH NO.	DWG NO.	REV		
SCALE 1" = 20'			SHEET		

NOTES:
 PLAN REFERENCE: LAND COURT PLAN 22161A
 LAND COURT PLAN 18924A
 PLAN BOOK 16, PLAN 29
 PLAN OBTAINED FROM CITY OF SOMERVILLE ENGINEERING
 "BEACON STREET" 1988, SHEET 14 OF 28
 PROJECT FILE NO. 80180. ELEVATION SHOWN ON THIS
 PLAN HELD FOR VERTICAL DATUM.
 NO SIGNIFICANT CHANGE IN GRADE BEYOND LOT LINES
 INVERTS AT SEWER MANHOLES TAKEN AT CENTERLINE OF TROUGH.

UTILITY STATEMENT
 THE UNDERGROUND UTILITIES SHOWN HAVE BEEN LOCATED FROM
 FIELD SURVEY INFORMATION AND EXISTING DRAWINGS. THE
 SURVEYOR MAKES NO GUARANTEE THAT THE UNDERGROUND UTILITIES
 SHOWN COMPRISE ALL SUCH UTILITIES IN THE AREA, EITHER IN
 SERVICE OR ABANDONED. THE LOCATIONS SHOWN ARE APPROXIMATE
 AND SAFE AND/OR THE RESPECTIVE PUBLIC AND PRIVATE UTILITY
 COMPANIES INVOLVED SHOULD BE ADVISED FOR ACCURATE DETERMINATION
 OF SUBSURFACE UTILITY LINES BEFORE DESIGN, CONSTRUCTION AND/OR
 DEMOLITION IS COMMENCED ON THE PROPERTY.

- LEGEND
- SEWER MANHOLE
 - WATER GATE
 - GAS GATE
 - FIRE ALARM MANHOLE
 - SDM
 - LIGHTPOST
 - DRAIN
 - HYDRANT
 - UTILITY POLE
 - CATCH BASIN
 - MANHOLE PARAPET



NO.	DATE	REVISION

DATE
10/24/03

SCALE
1" = 20'



BEACON STREET
SOMERVILLE, MA.

BASE PLAN
EXISTING CONDITIONS

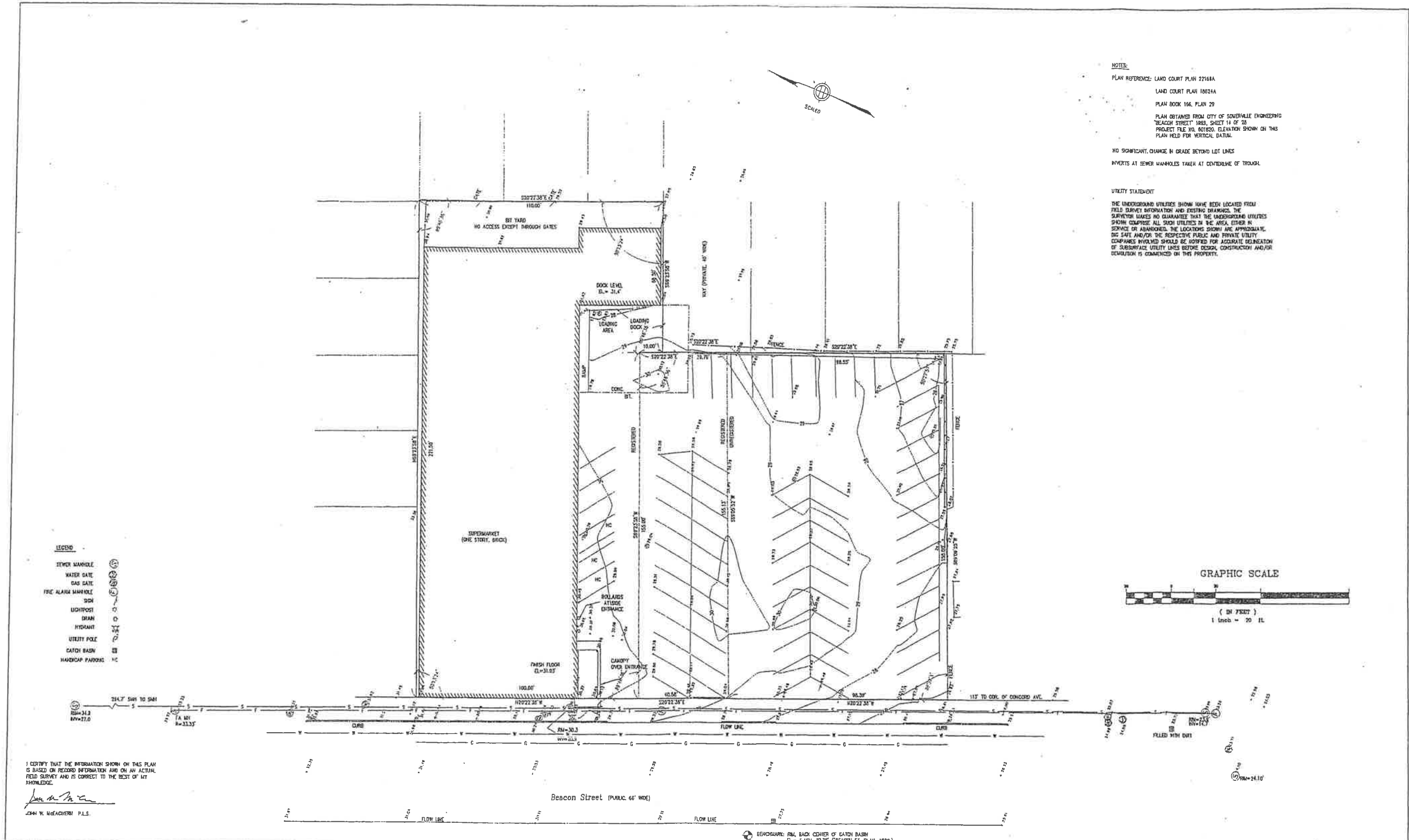
Prepared by:
Bowditch and Crandall, Inc.
252 Massachusetts Ave.
Arlington, Ma. 02474
Tel. 781-641-9600

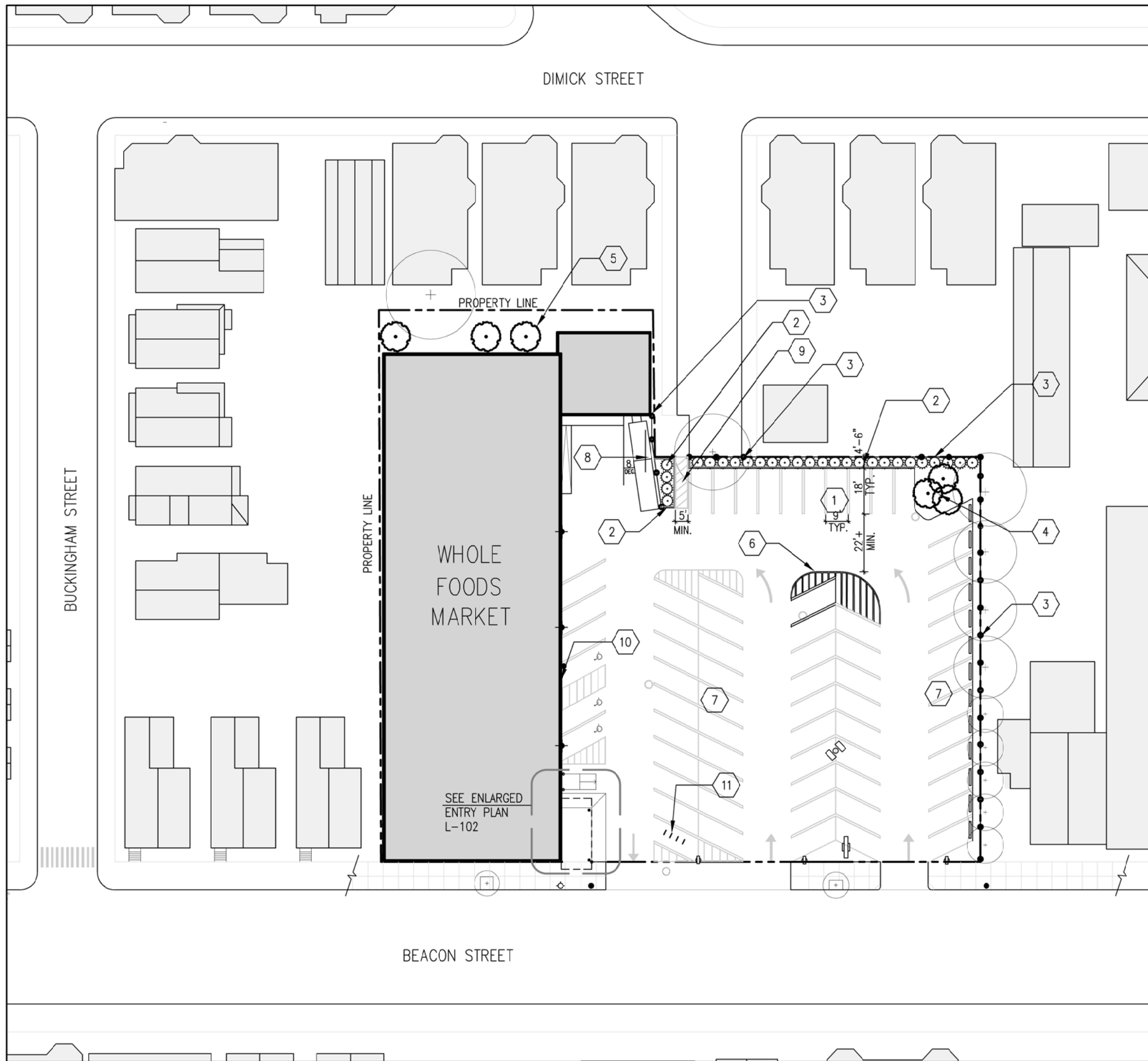
SHEET NO.
DRAWING NO.
FILE NAME
09-085gl

I CERTIFY THAT THE INFORMATION SHOWN ON THIS PLAN IS BASED ON RECORD INFORMATION AND ON AN ACTUAL FIELD SURVEY AND IS CORRECT TO THE BEST OF MY KNOWLEDGE.

JOHN W. WEAACHER, P.L.S.

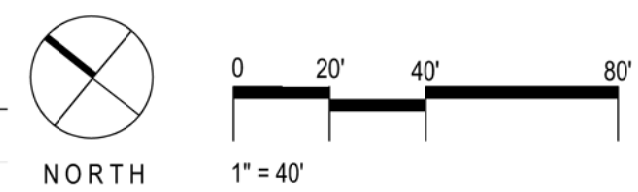
BENCHMARK: B.M. BACK CORNER OF CATCH BASIN
EL. = 6.484, 27.75 (BEACON ST. PLAN, 1999.)





- 1 MOVE EXISTING PARKING SPACES SOUTH 6.5' TO ADD PLANTING STRIP. REPLACE PARKING SPACE LOST FROM PLANTING POCKET (#4)
- 2 NEW PLANTING STRIP WITH CONCRETE CURBING, UPRIGHT EVERGREEN TREES, 7'-8" TALL
- 3 NEW WOOD STOCKADE FENCE 6' HIGH, REMOVE EXISTING CHAIN LINK FENCE
- 4 NEW PLANTING POCKET IN CORNER OF LOT WITH CONCRETE CURBING & 3 UPRIGHT DECIDUOUS TREES 3" CAL. AND GROUND COVER
- 5 PLANT 3 NEW UPRIGHT DECIDUOUS TREES 3" CAL. AND MULCH
- 6 NEW STRIPING AT END OF EXISTING PARKING ROW, ADD 1 NEW SPACE TO REPLACE SPACE AT NEW BIKE PARKING LOCATION #14
- 7 EXISTING PARKING STRIPING TO REMAIN IN THE SAME ORIENTATION, RE-STRIPE USING THE EXISTING PATTERN
- 8 RE-ALIGN COMPACTOR & DUMPSTER 8' CLOSER TO PERPENDULAR
- 9 DEFINED PEDESTRIAN ACCESS PATH
- 10 NEW HANDICAPPED SIGN ON BUILDING TO READ "VAN ACCESSIBLE" AND WITH THE INTERNATIONAL SYMBOL OF ACCESSIBILITY
- 11 NEW BIKE RACK FOR 8 BIKES

	EXISTING	PROPOSED
SITE AREA	44,269 SF	44,269 SF
BUILDING AREA	15,311 SF	15,311 SF
PERVIOUS AREA	1,995 SF	2,926 SF
PARKING SPACES	67	67
BIKE PARKING SPACES	3	8

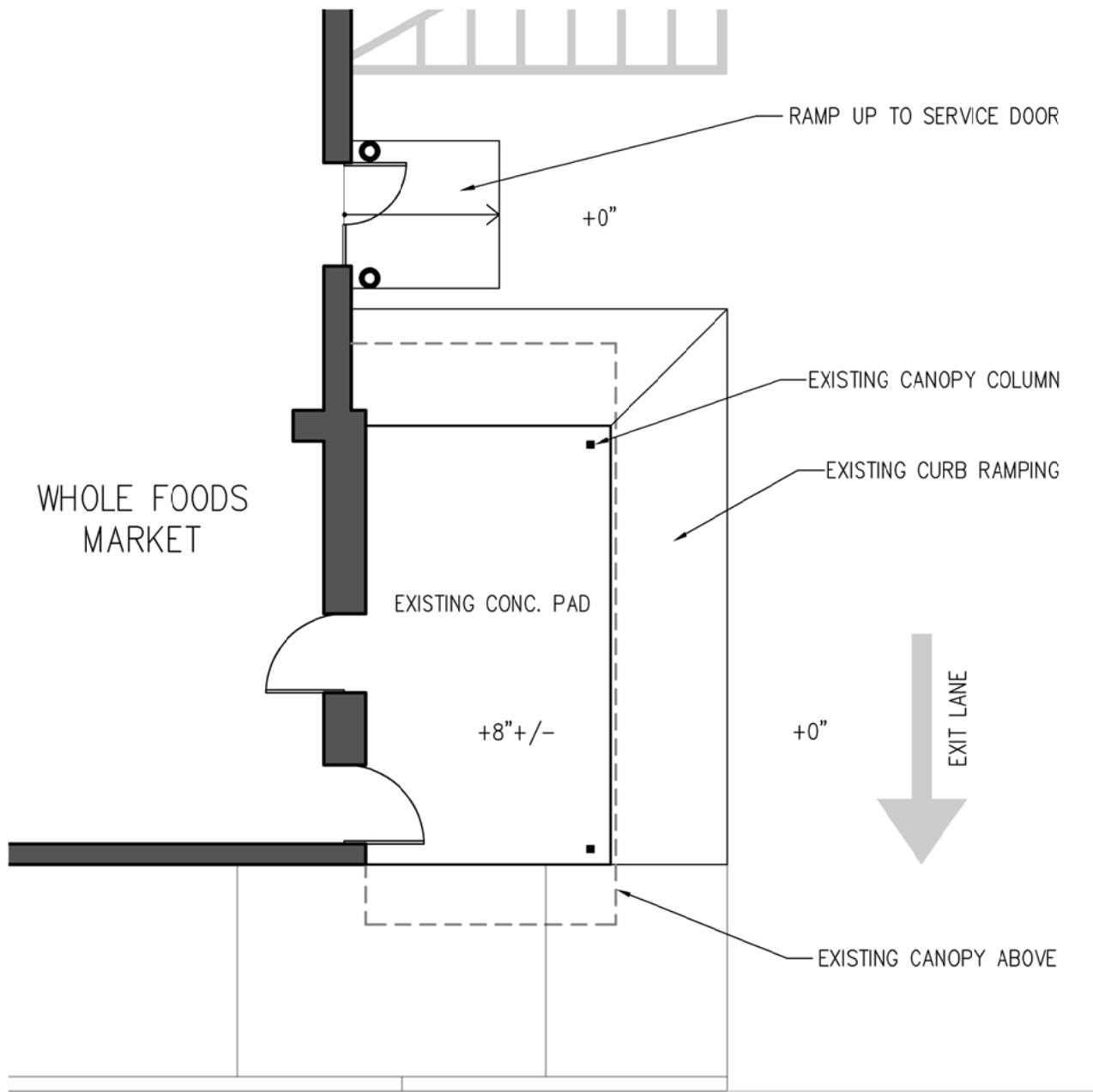


Project Title:
**RENOVATIONS TO:
 WHOLE FOOD MARKET
 45 BEACON STREET
 SOMERVILLE, MA**

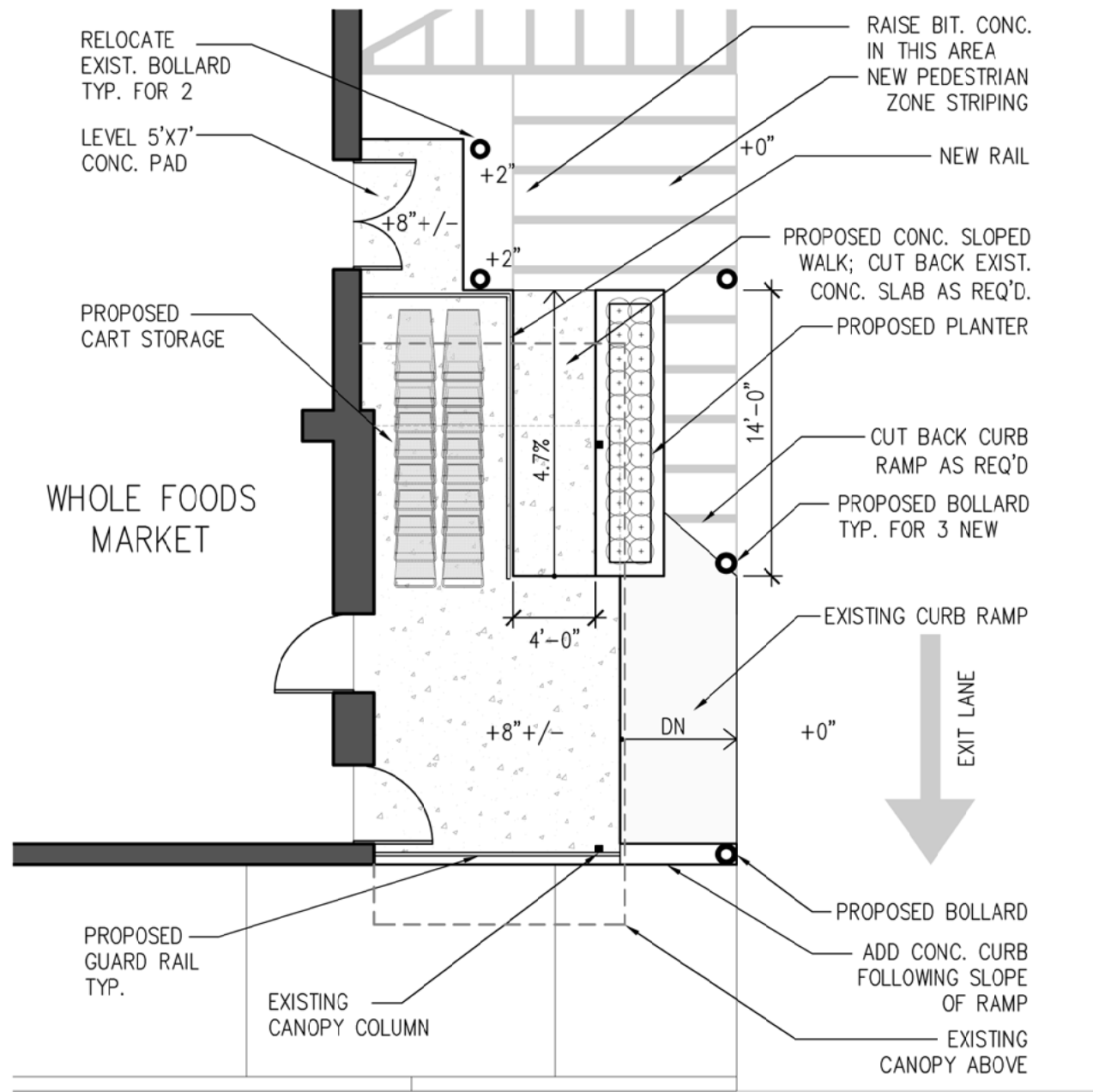
Prepared By:
JACOBS
 JACOBS CONSULTANTS, INC.
 JACOBS ENGINEERING GROUP, INC.
 One Broadway
 Cambridge, MA 02142
 (617) 481-6450

SITE IMPROVEMENT PLAN
 Scale : 1"=40'-0"
 Date : 03/05/13
 Designed by : C.X.G.
 Drawn by : C.A.N.
 Checked by : S.E.O.

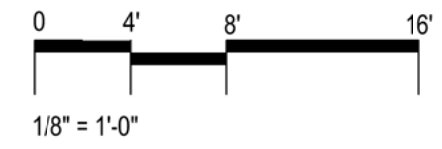
Drawing No.: **L-101**
 Project No.:



EXISTING STORE ENTRY



PROPOSED STORE ENTRY



RENOVATIONS TO:
WHOLE FOOD MARKET
 45 BEACON STREET
 SOMERVILLE, MA

Project Title:

JACOBS
 JACOBS CONSULTANTS, INC.
 JACOBS ENGINEERING GROUP, INC.
 One Broadway
 Cambridge, MA 02142
 (617) 491-6450

Prepared By:

ENLARGED STORE ENTRY PLAN

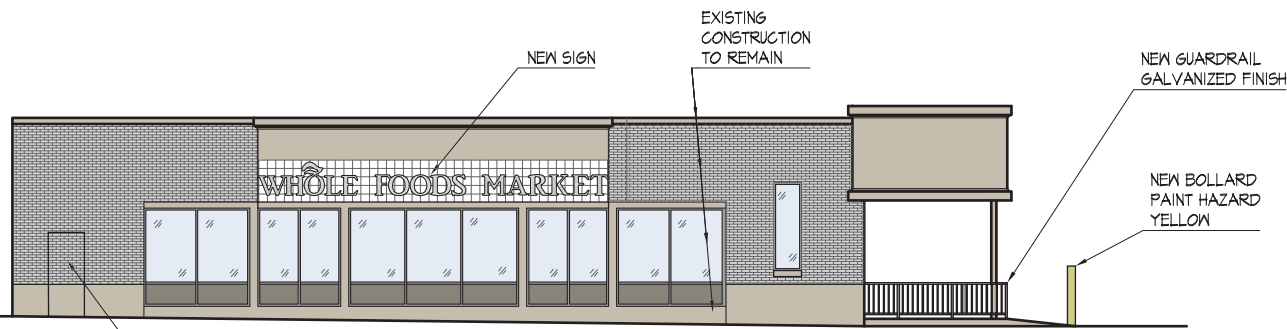
Designed by : C.X.G.
 Drawn by : C.A.N.
 Checked by : S.E.O.

Scale : 1/8" = 1'-0"
 Date : 03/05/13

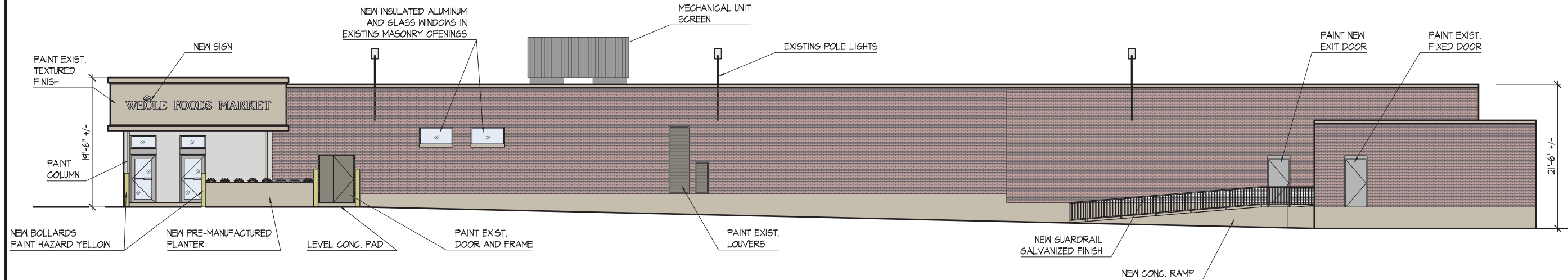
Drawing No.:

L-102

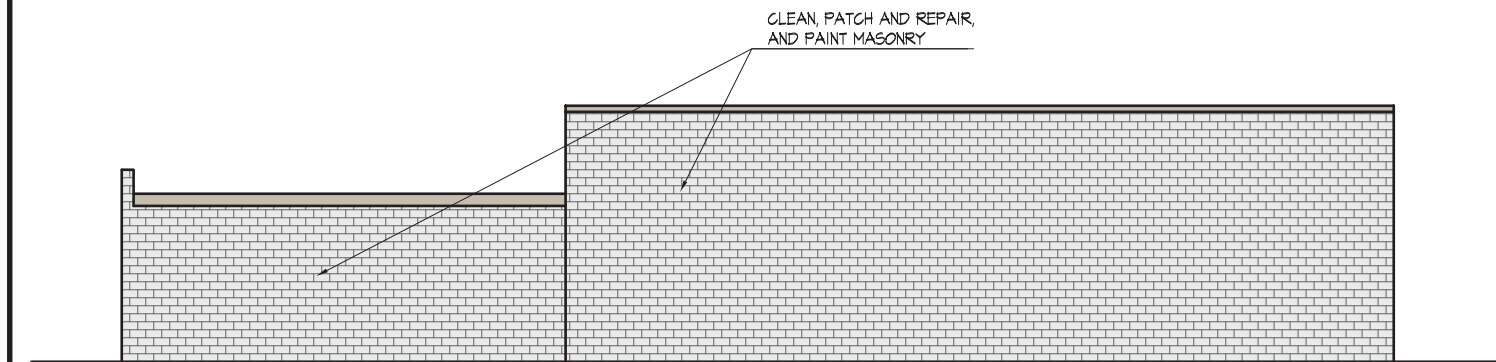
Project No.:



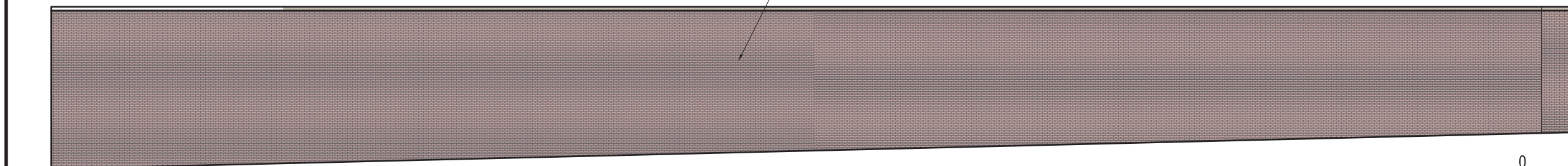
① (SOUTH) BEACON STREET ELEVATION



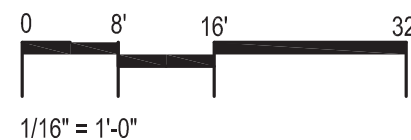
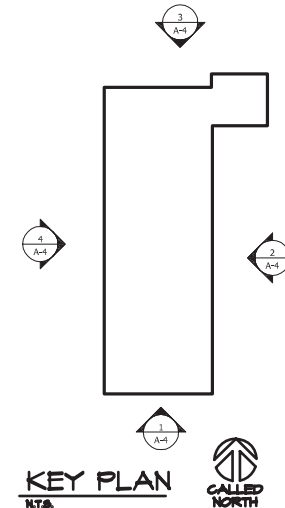
② (EAST) PARKING LOT ELEVATION



③ (NORTH) REAR ELEVATION



④ WEST ELEVATION



RENOVATIONS TO:
WHOLE FOOD MARKET
 45 BEACON STREET
 SOMERVILLE, MA

Project Title:

JACOBS
 JACOBS CONSULTANTS, INC.
 JACOBS ENGINEERING GROUP, INC.
 One Broadway
 Cambridge, MA 02142
 (617) 491-6450

Prepared By:

EXTERIOR ELEVATIONS
 AND DETAILS

Designed by : C.X.G.
 Drawn by : C.A.N.
 Checked by : S.E.O.
 Scale : 1/16" = 1'-0"
 Date : 03/05/13

Drawing No.:

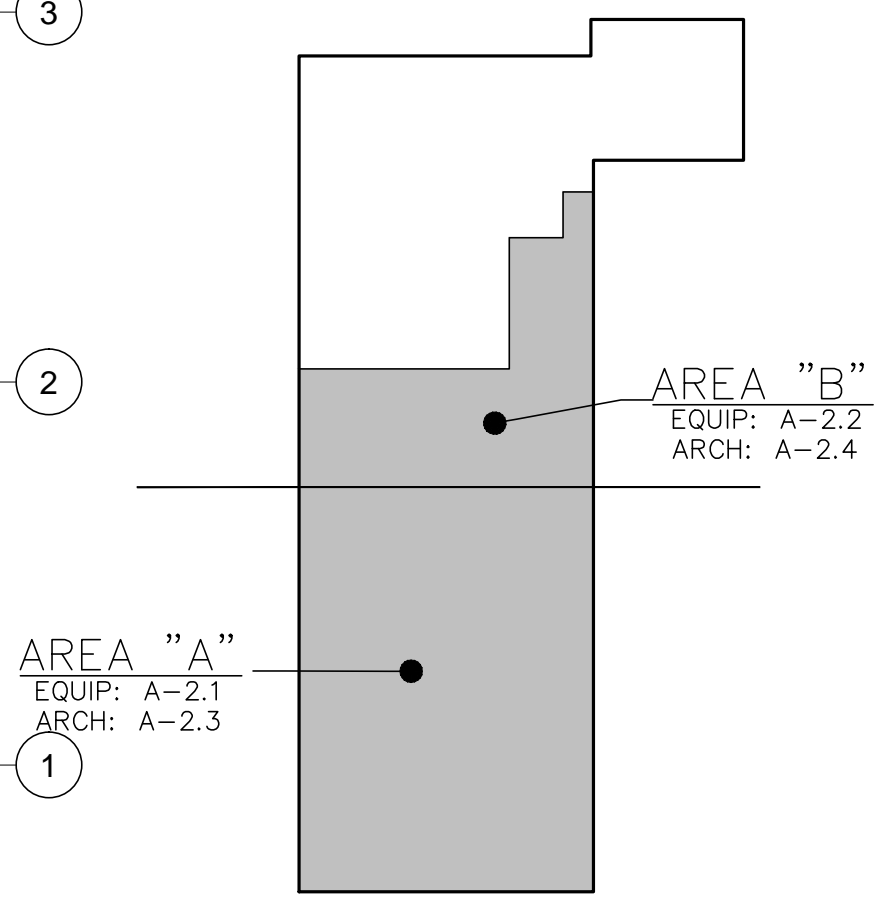
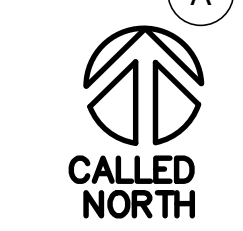
L-103

Project No.:

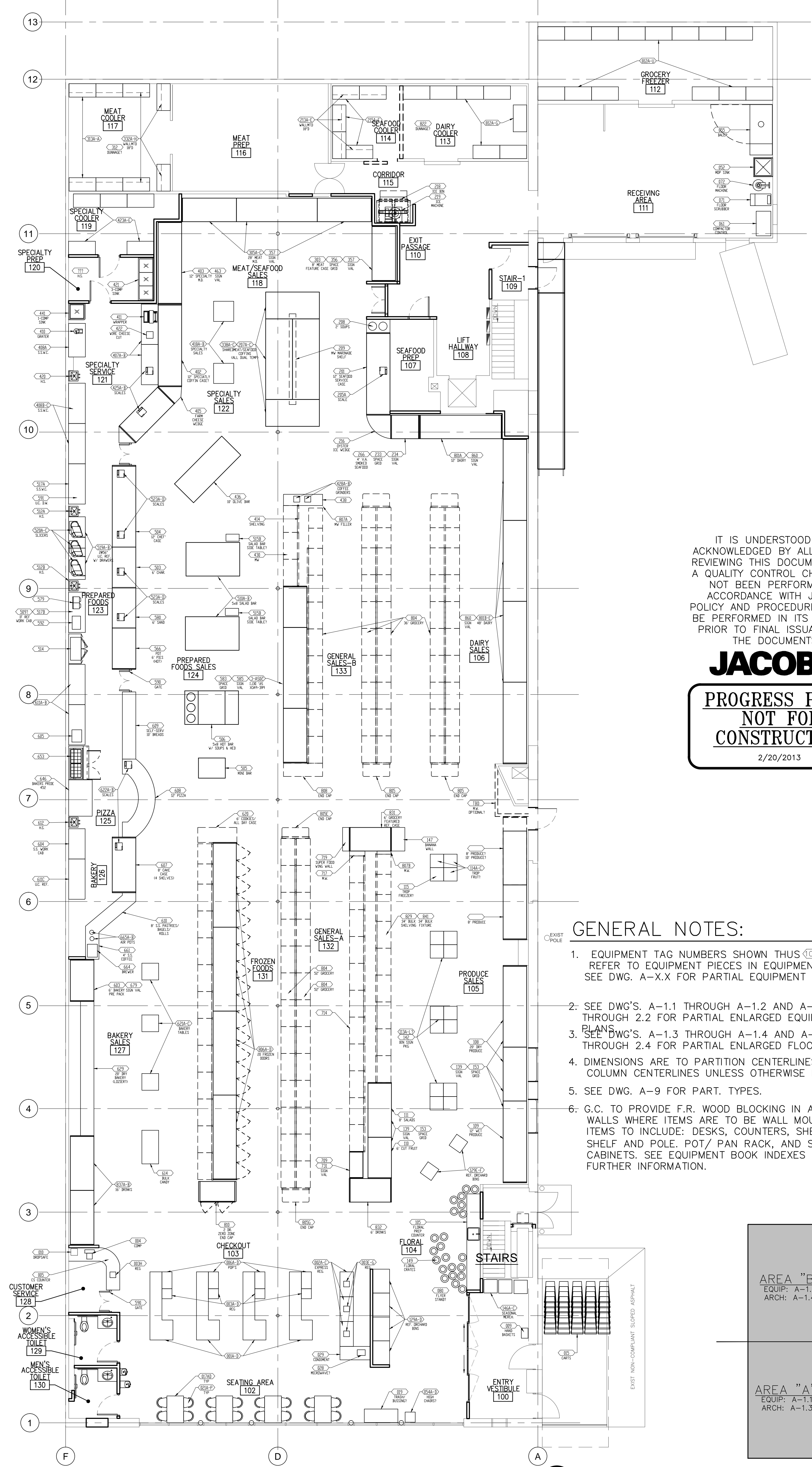
Notes:
 1. All equipment shall be installed in accordance with the manufacturer's instructions.
 2. All equipment shall be installed in accordance with the applicable codes and regulations.
 3. All equipment shall be installed in accordance with the applicable codes and regulations.
 4. All equipment shall be installed in accordance with the applicable codes and regulations.
 5. All equipment shall be installed in accordance with the applicable codes and regulations.



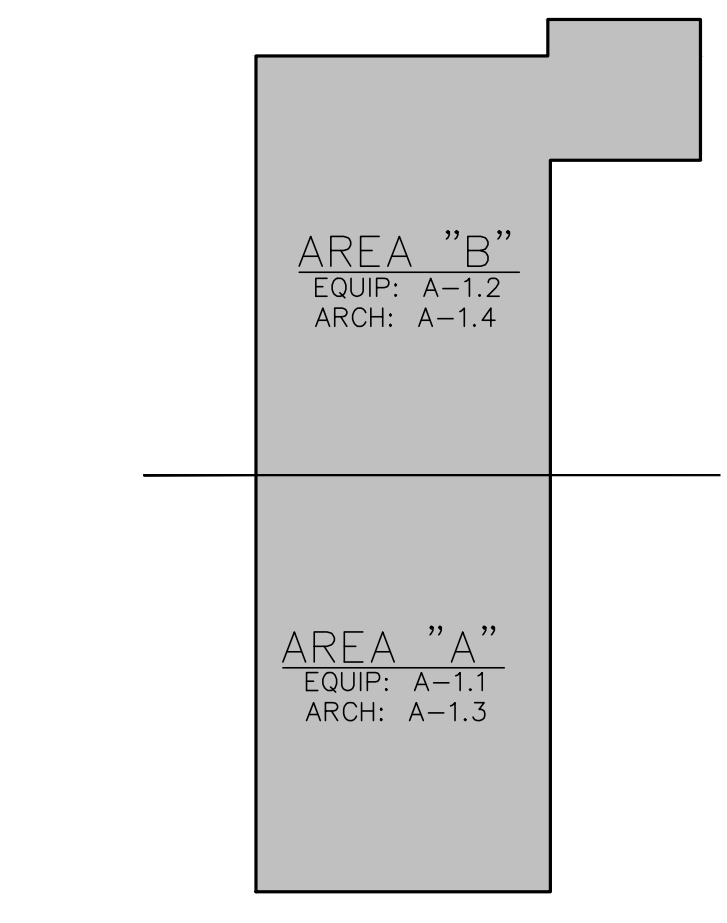
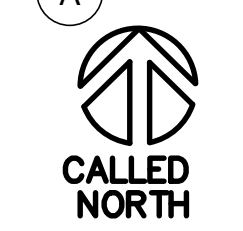
1 BASEMENT EQUIPMENT PLAN
 SCALE: 1/8" = 1'-0"



BASEMENT KEY PLAN
 NOT TO SCALE



2 FIRST FLOOR EQUIPMENT PLAN
 SCALE: 1/8" = 1'-0"



KEY PLAN
 NOT TO SCALE

IT IS UNDERSTOOD AND ACKNOWLEDGED BY ALL PARTIES REVIEWING THIS DOCUMENT THAT A QUALITY CONTROL CHECK HAS NOT BEEN PERFORMED IN ACCORDANCE WITH JACOBS POLICY AND PROCEDURE. IT WILL BE PERFORMED IN ITS ENTIRETY PRIOR TO FINAL ISSUANCE OF THE DOCUMENTS.

JACOBS
PROGRESS PRINT
NOT FOR CONSTRUCTION
 2/20/2013

- GENERAL NOTES:**
- EQUIPMENT TAG NUMBERS SHOWN THUS (EQUIP) REFER TO EQUIPMENT PIECES IN EQUIPMENT BOOK. SEE DWG. A-X-X FOR PARTIAL EQUIPMENT SCHEDULES.
 - SEE DWG'S. A-1.1 THROUGH A-1.2 AND A-2.1 THROUGH 2.2 FOR PARTIAL ENLARGED EQUIPMENT PLAN.
 - SEE DWG'S. A-1.3 THROUGH A-1.4 AND A-2.3 THROUGH 2.4 FOR PARTIAL ENLARGED FLOOR PLANS.
 - DIMENSIONS ARE TO PARTITION CENTERLINES OR COLUMN CENTERLINES UNLESS OTHERWISE NOTED.
 - SEE DWG. A-9 FOR PART. TYPES.
 - G.C. TO PROVIDE F.R. WOOD BLOCKING IN ALL WALLS WHERE ITEMS ARE TO BE WALL MOUNTED. ITEMS TO INCLUDE: DESKS, COUNTERS, SHELVING, SHELF AND POLE. POT/ PAN RACK, AND STORAGE CABINETS. SEE EQUIPMENT BOOK INDEXES FOR FURTHER INFORMATION.

Project Title:	RENOVATIONS TO: WHOLE FOODS MARKET 47 BEACON STREET SOMERVILLE, MASSACHUSETTS
Prepared By:	JACOBS JACOBS CONSULTANTS, INC. JACOBS ENGINEERING GROUP, INC. One Broadway Cambridge, MA 02142 (617) 552-6600
Designed by:	
Drawn by:	
Checked by:	
Scale:	Scale: 1/8" = 1'-0"
Date:	Date:
Drawing No.:	A-1
Project No.:	FRYR4300